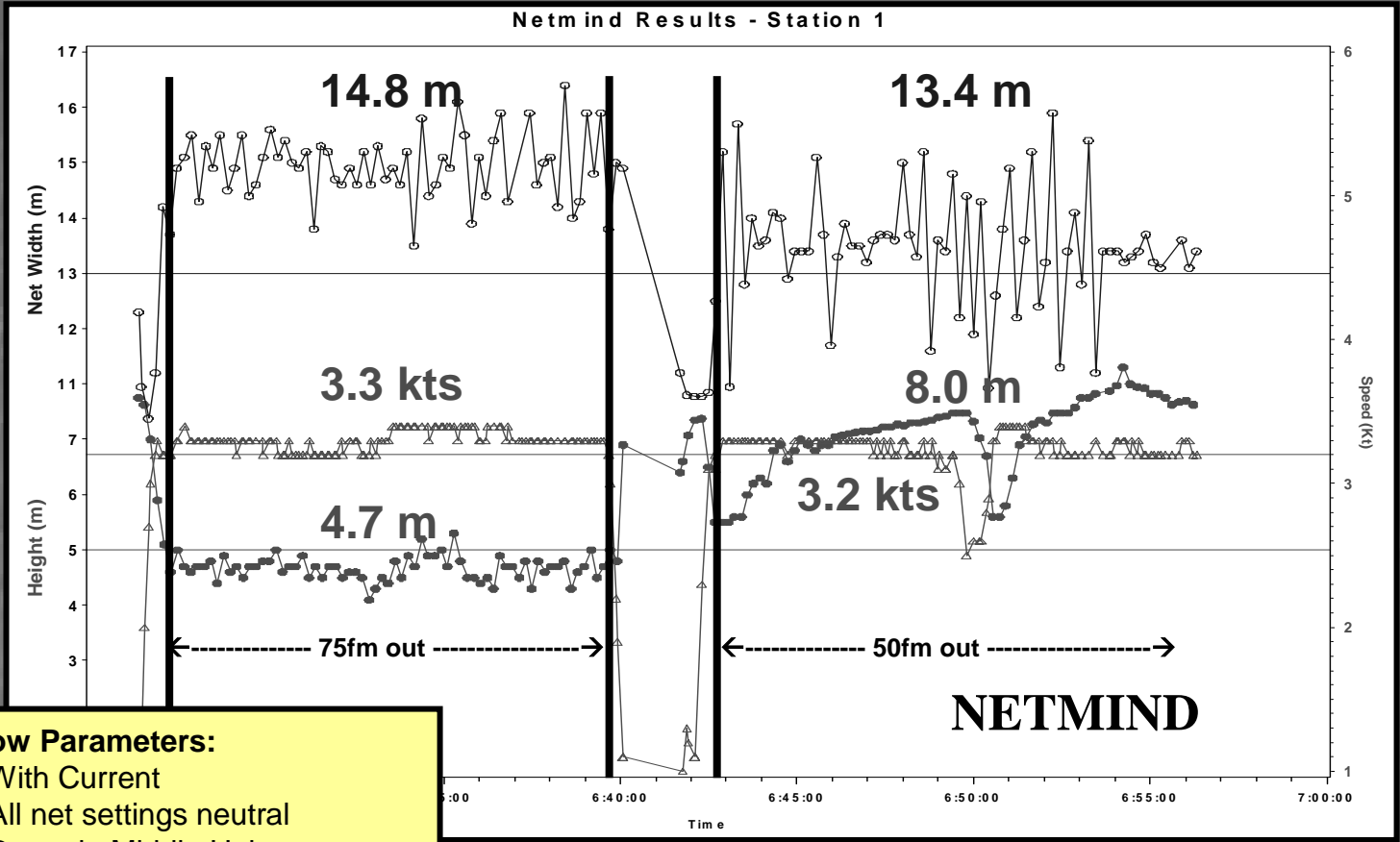


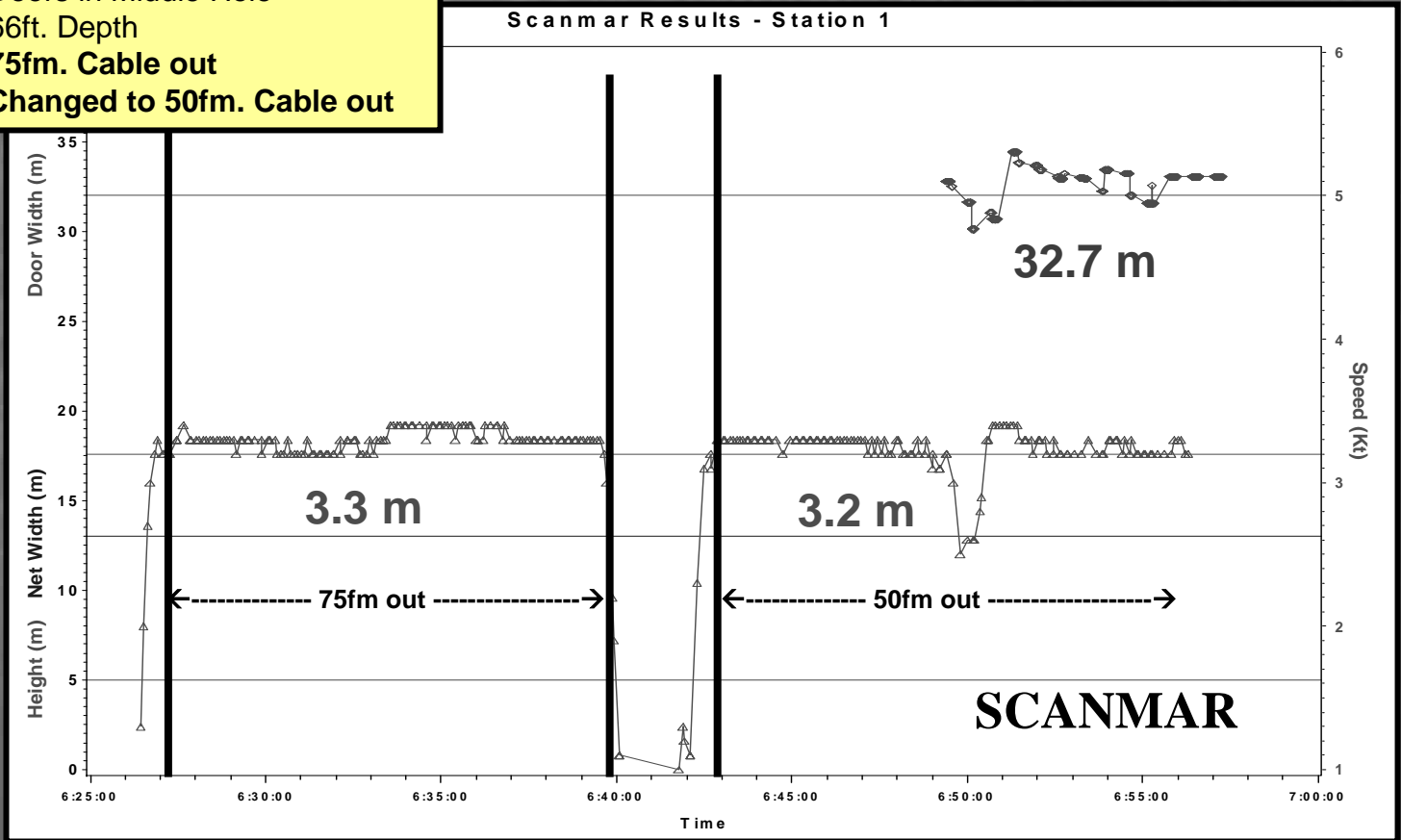
Station 1 – Netmind on net / Scanmar on doors

Scope change test / 66' water depth



Tow Parameters:

- With Current
- All net settings neutral
- Doors in Middle Hole
- 66ft. Depth
- 75fm. Cable out
- Changed to 50fm. Cable out



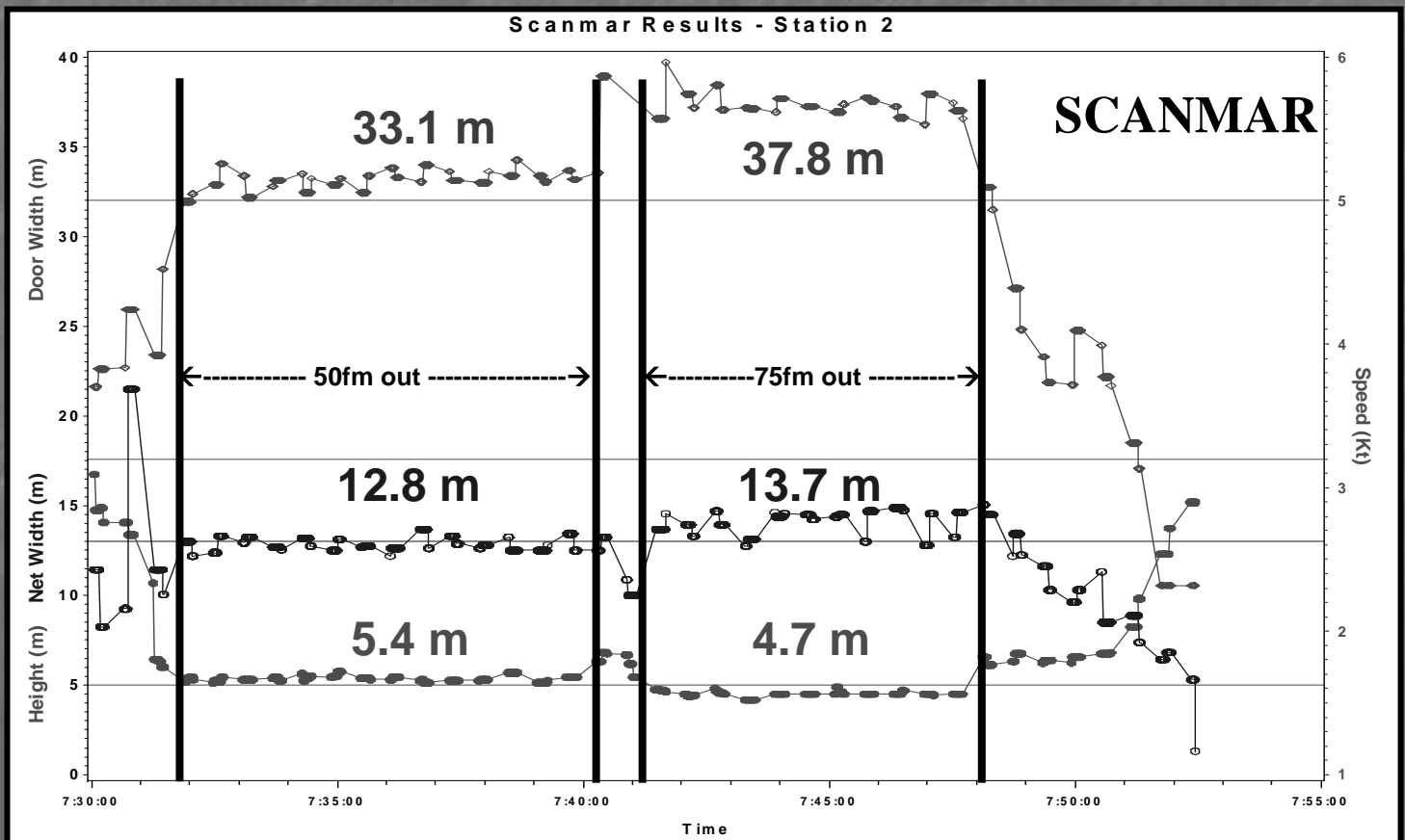
Note: Vessel speed data taken with Netmind gear but plotted with Scanmar data for ease of interpretation.

Station 2 – Scanmar Only

Scope change test / 66' water depth

Tow Parameters:

- With Current
- All net settings neutral
- Doors in Middle Hole
- 66ft. Depth
- 50fm. Cable out / Changed to 75fm.cable out

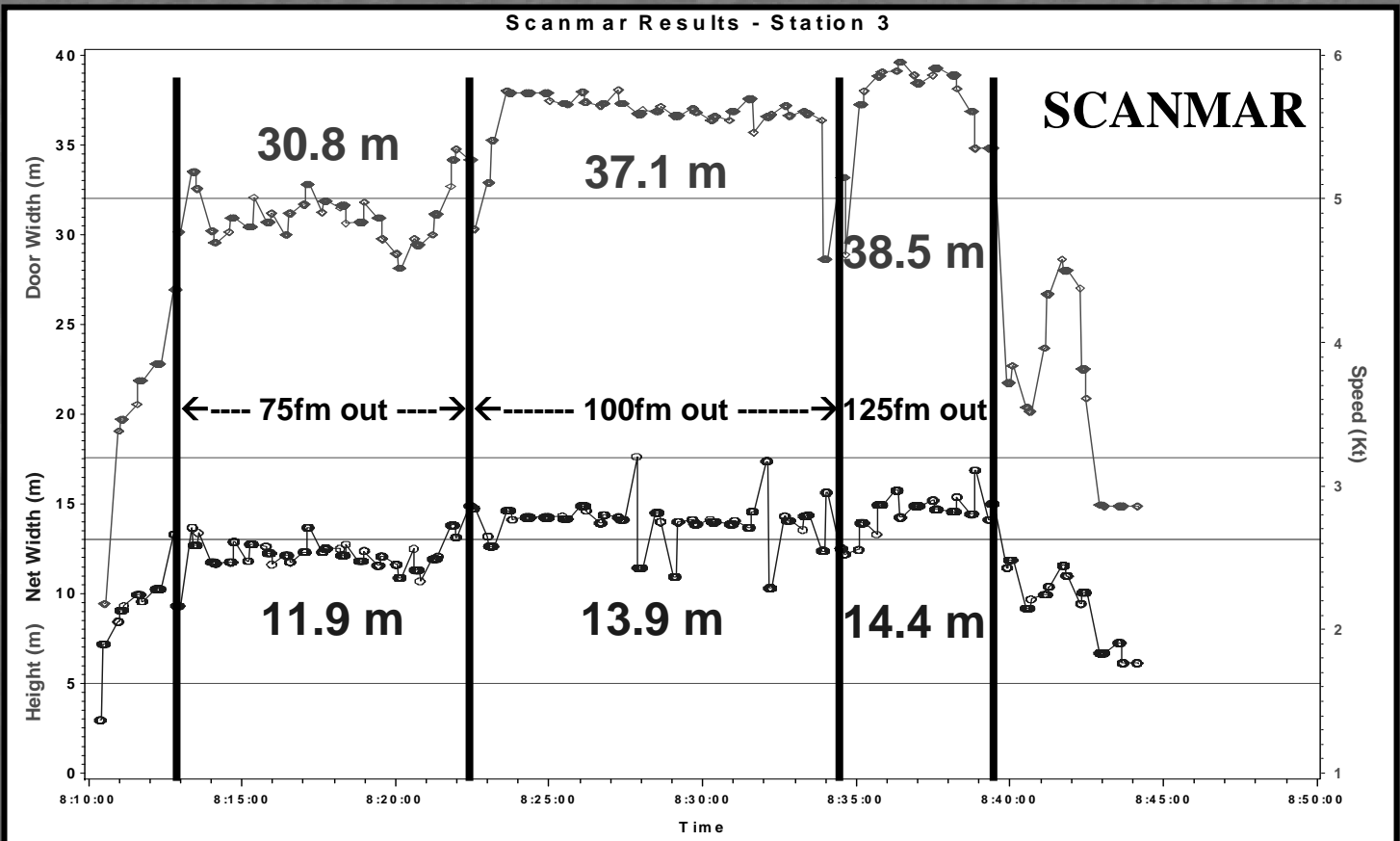


Station 3 – Scanmar Only

Scope change test / 120' water depth

Tow Parameters:

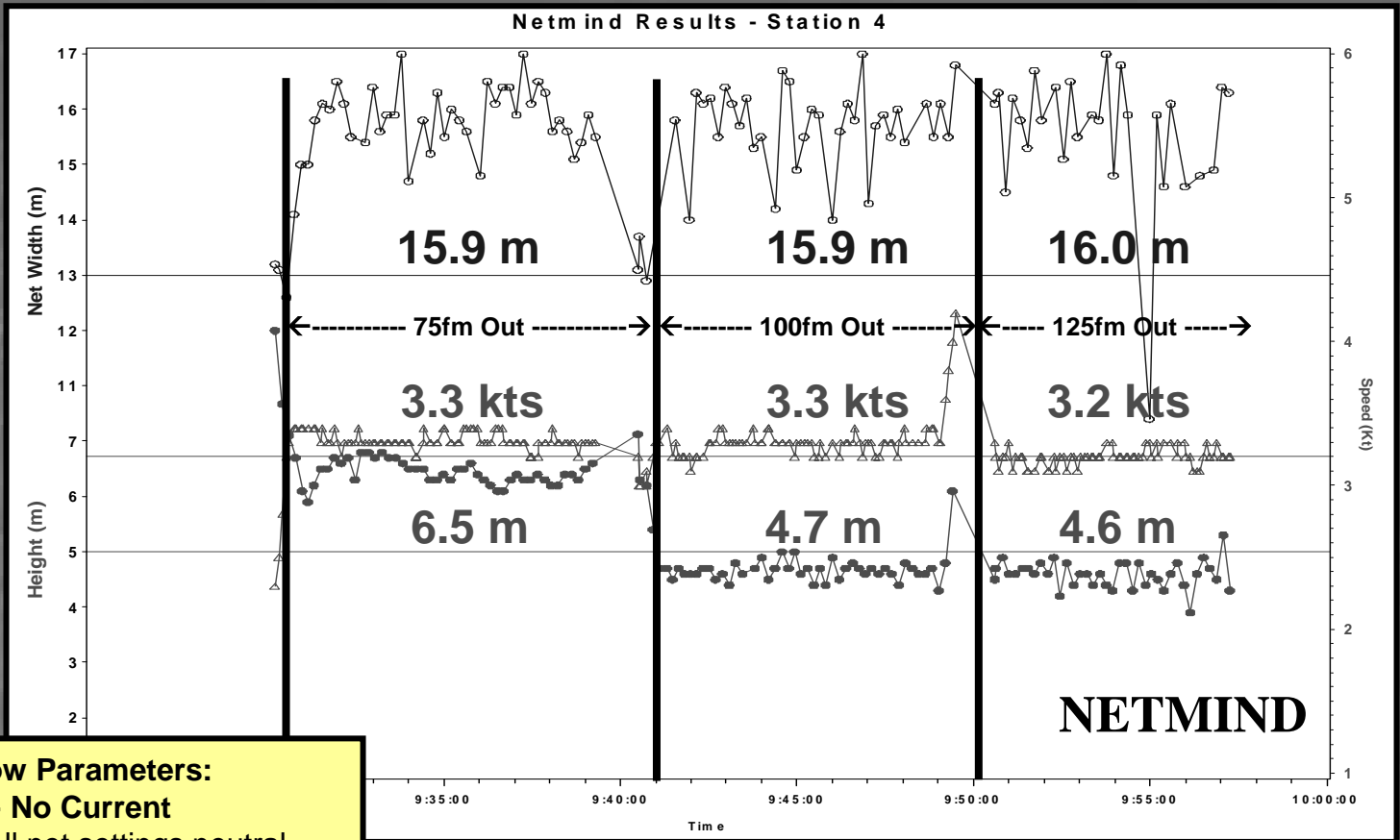
- With Current
- All net settings neutral
- Doors in Middle Hole
- 75fm. Cable out / Changed to 100fm.cable out / To 125 fathom out



Note: Headline sensor giving erroneous readings.

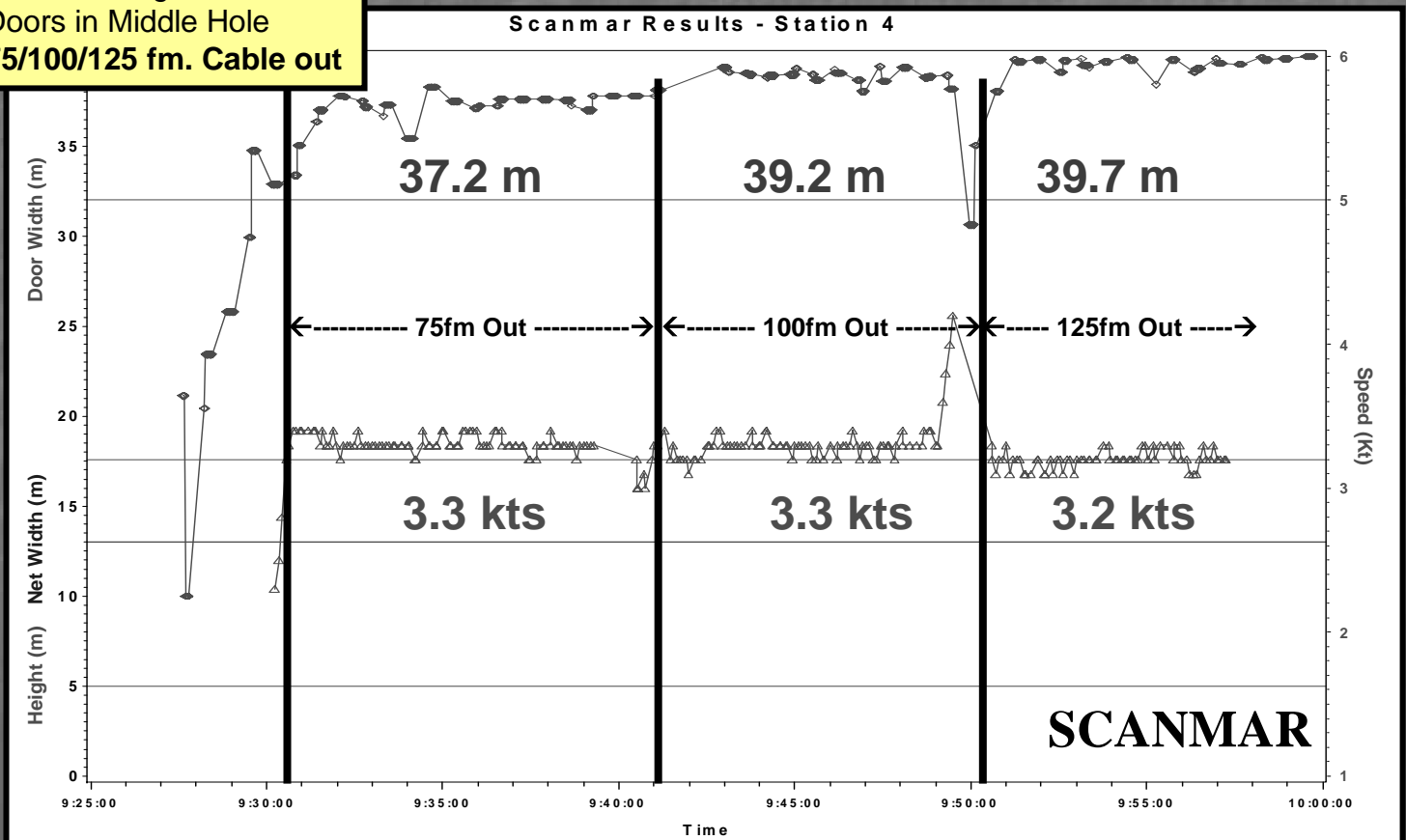
Station 4 – Netmind on net / Scanmar on doors

Scope change test / 120' water depth



Tow Parameters:

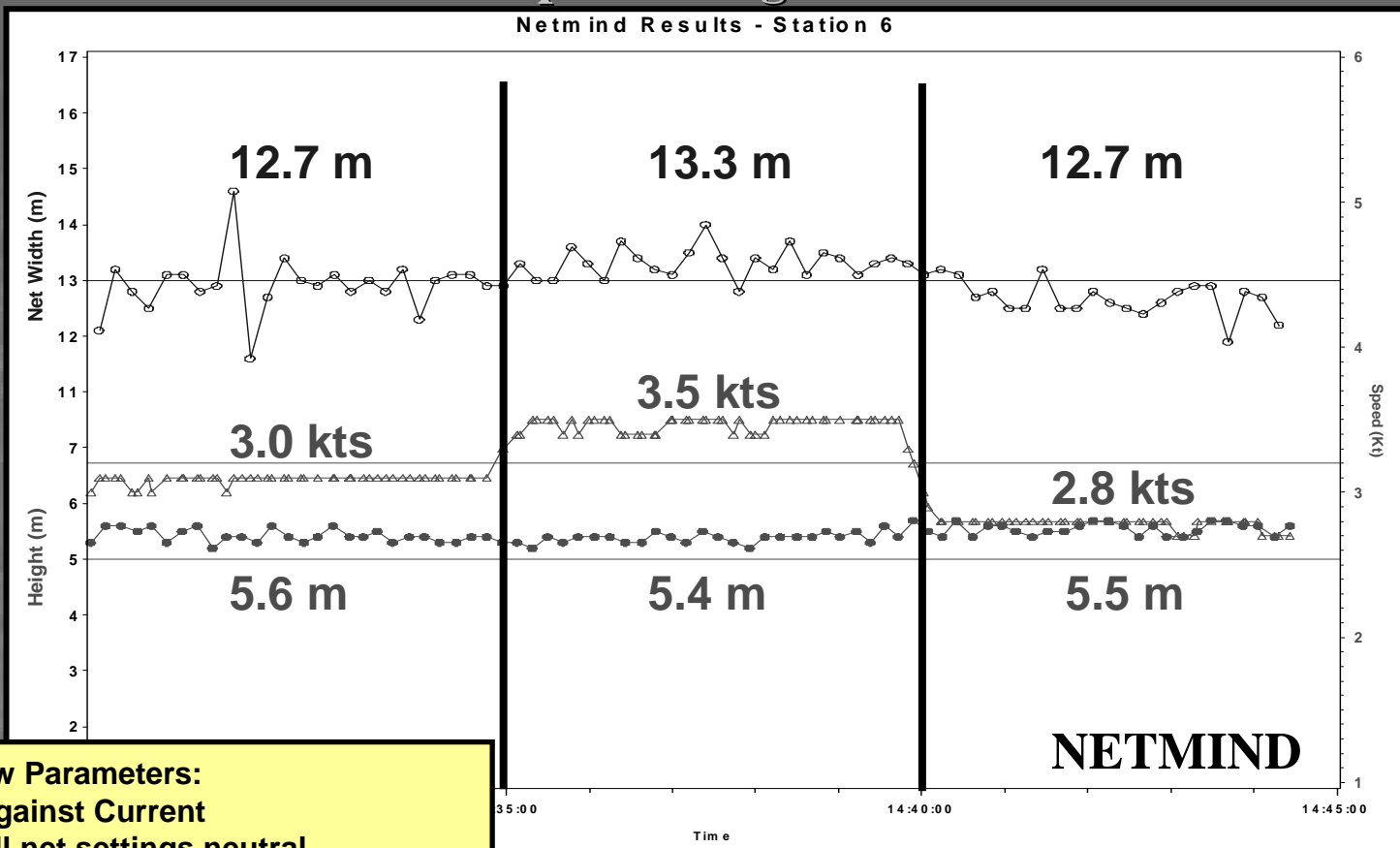
- ~ No Current
- All net settings neutral
- Doors in Middle Hole
- 75/100/125 fm. Cable out



Note: Vessel speed data taken with Netmind gear but plotted with Scanmar data for ease of interpretation.

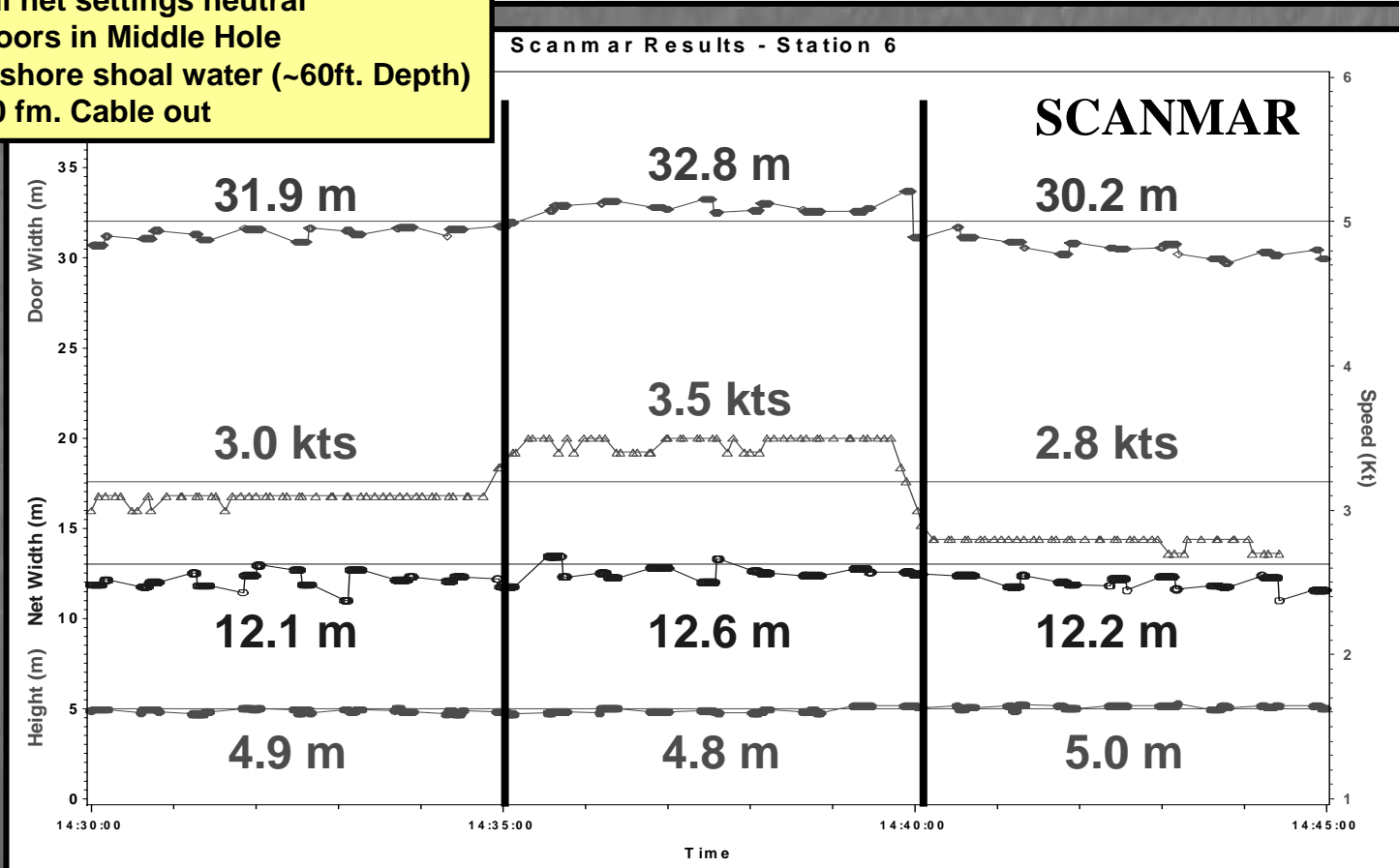
Station 6 – Scanmar and Netmind both installed

Speed change test



Tow Parameters:

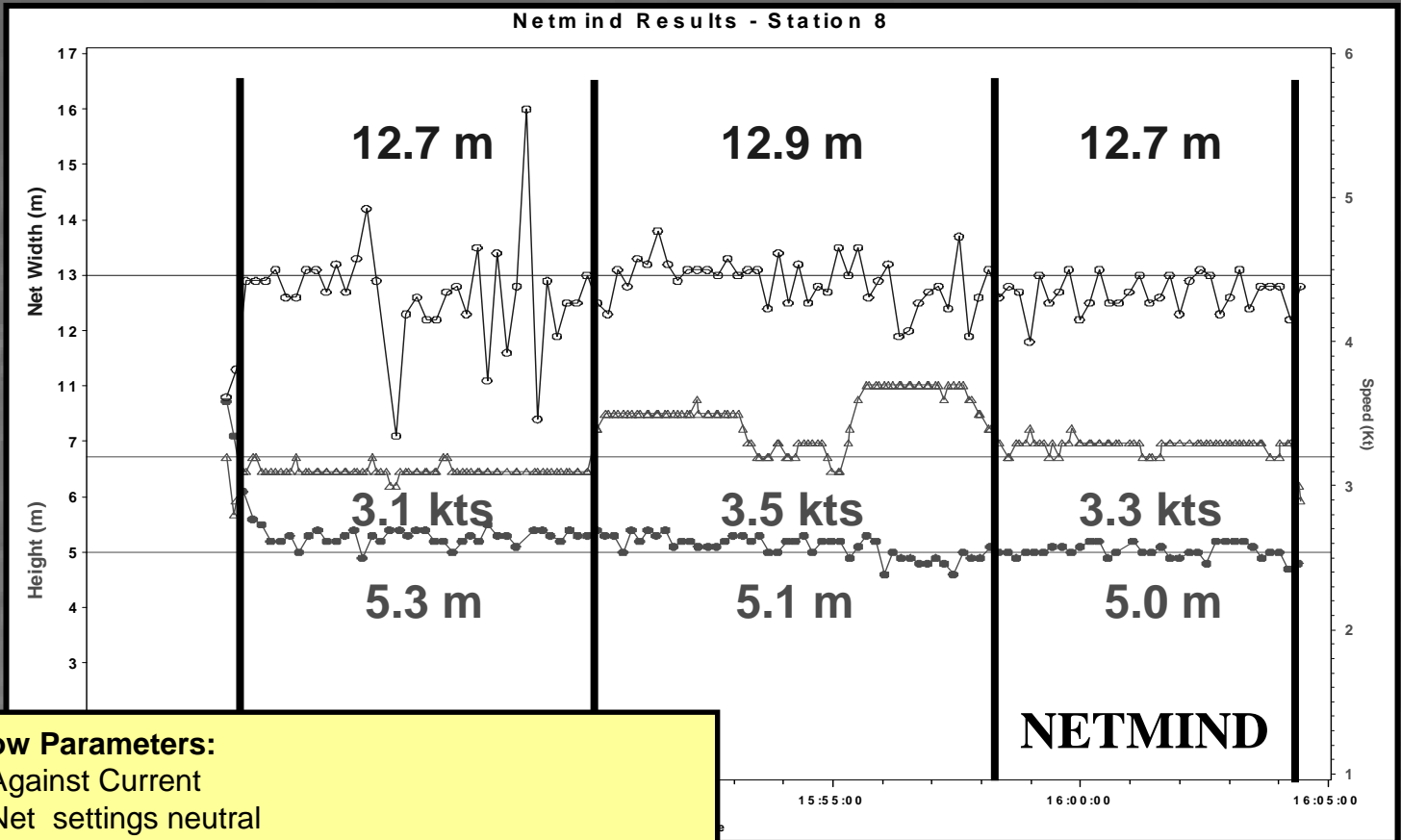
- Against Current
- All net settings neutral
- Doors in Middle Hole
- Inshore shoal water (~60ft. Depth)
- 50 fm. Cable out



Note: Vessel speed data taken with Netmind gear but plotted with Scanmar data for ease of interpretation.

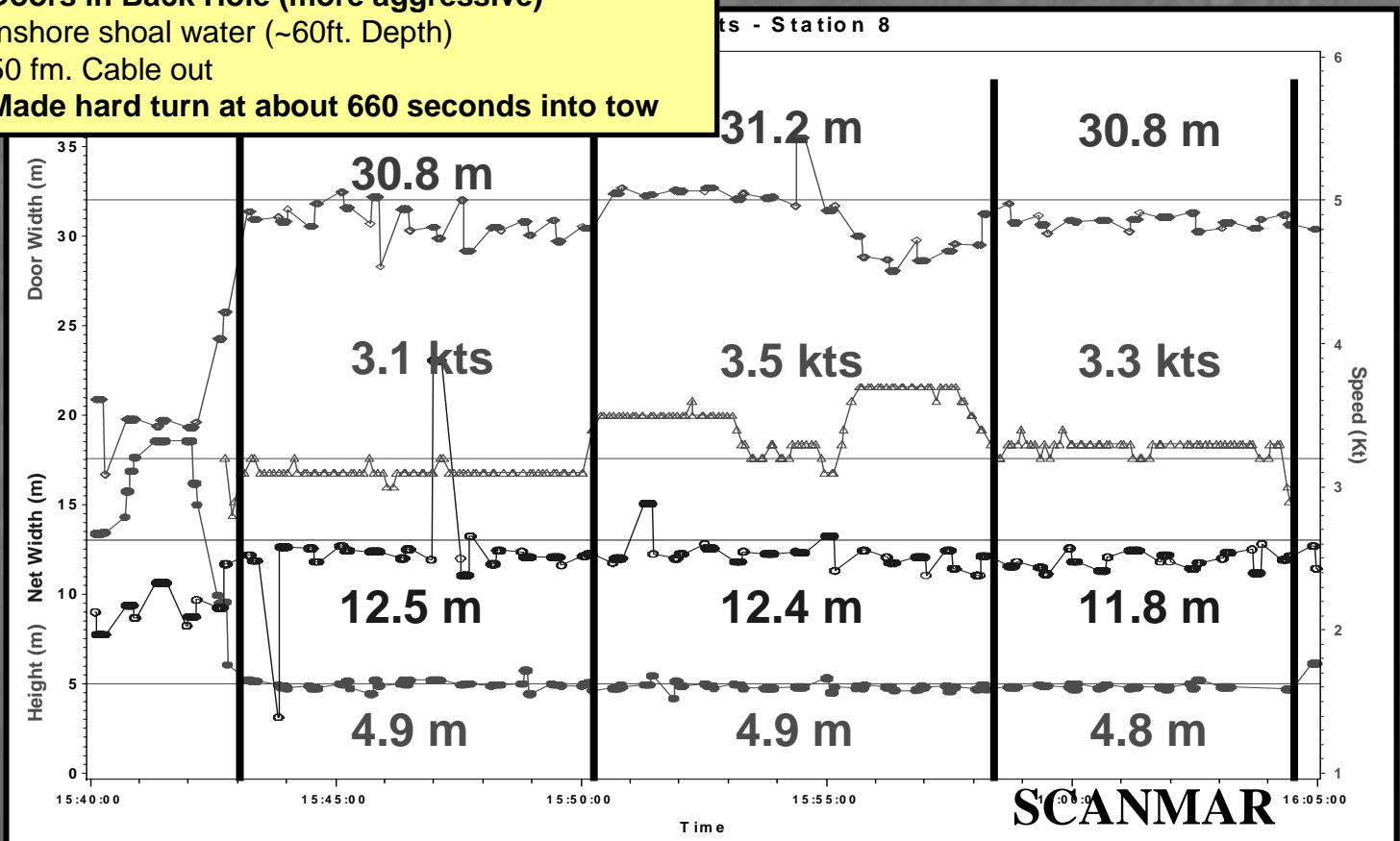
Station 8 – Scanmar and Netmind both installed

Speed change test



Tow Parameters:

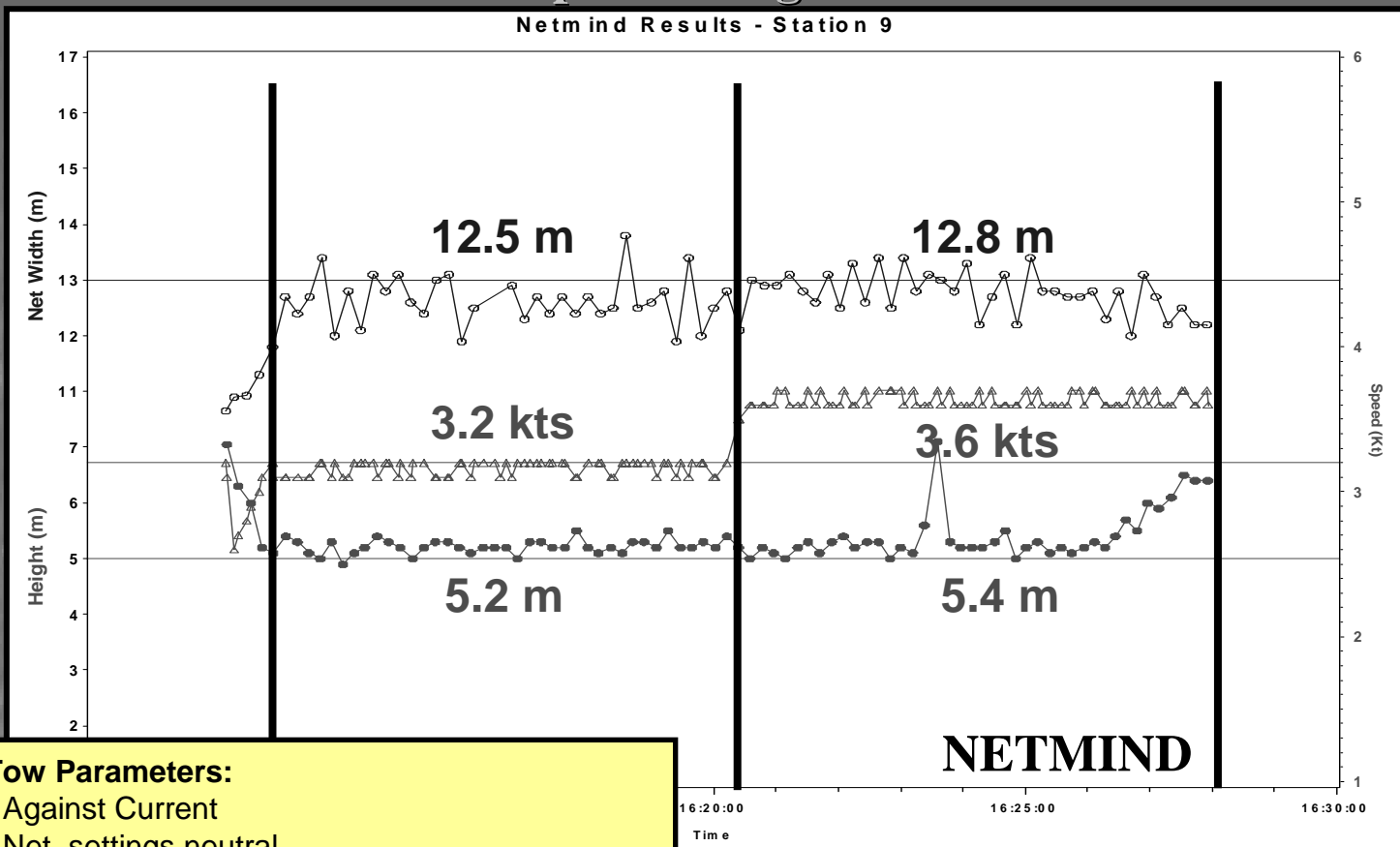
- Against Current
- Net settings neutral
- **Doors in Back Hole (more aggressive)**
- Inshore shoal water (~60ft. Depth)
- 50 fm. Cable out
- **Made hard turn at about 660 seconds into tow**



Note: Vessel speed data taken with Netmind gear but plotted with Scanmar data for ease of interpretation.

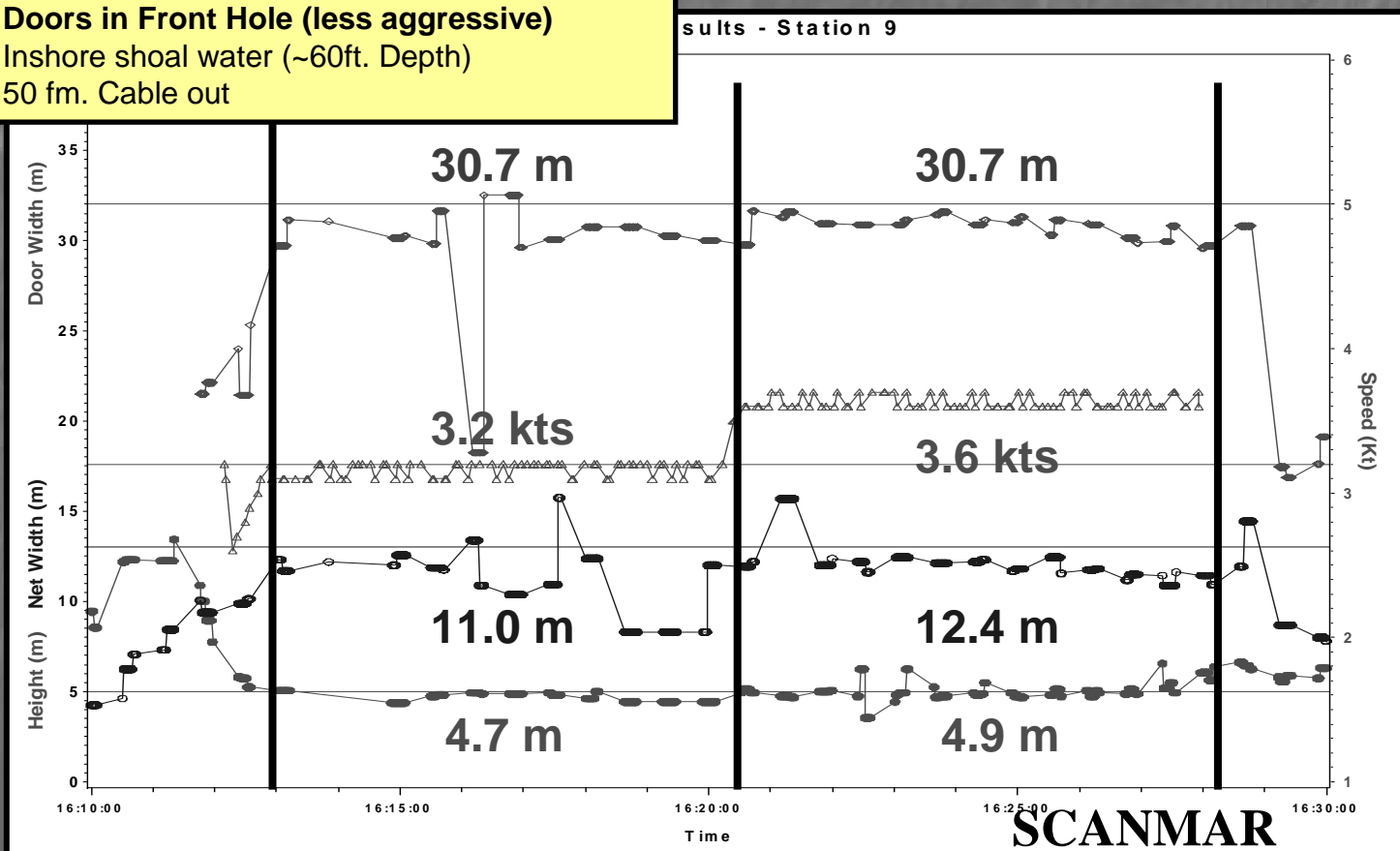
Station 9 – Scanmar and Netmind both installed

Speed change test



Tow Parameters:

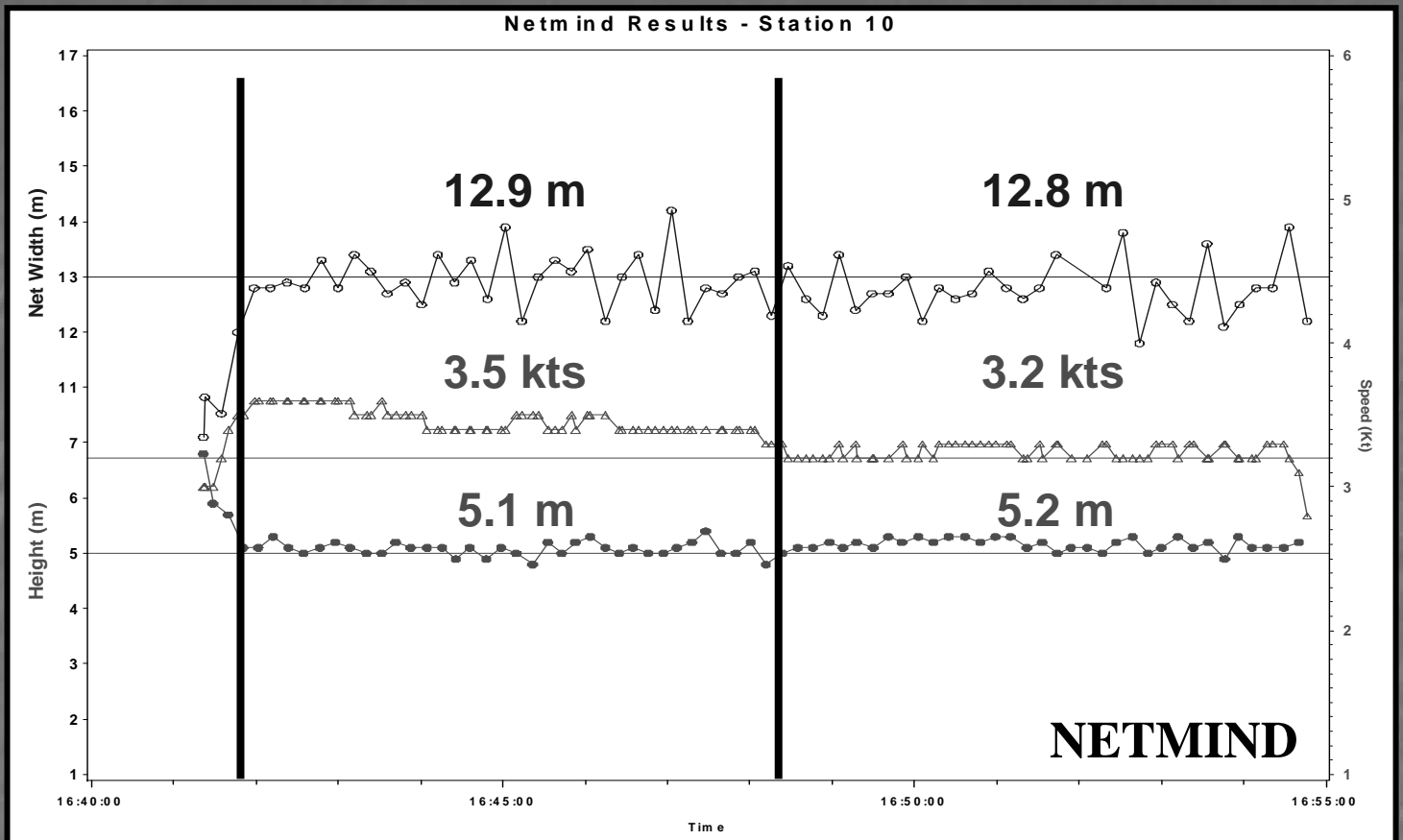
- Against Current
- Net settings neutral
- **Doors in Front Hole (less aggressive)**
- Inshore shoal water (~60ft. Depth)
- 50 fm. Cable out



Note: Vessel speed data taken with Netmind gear but plotted with Scanmar data for ease of interpretation.

Station 10 – Both sensor sets installed / Scanmar data lost

Speed change test

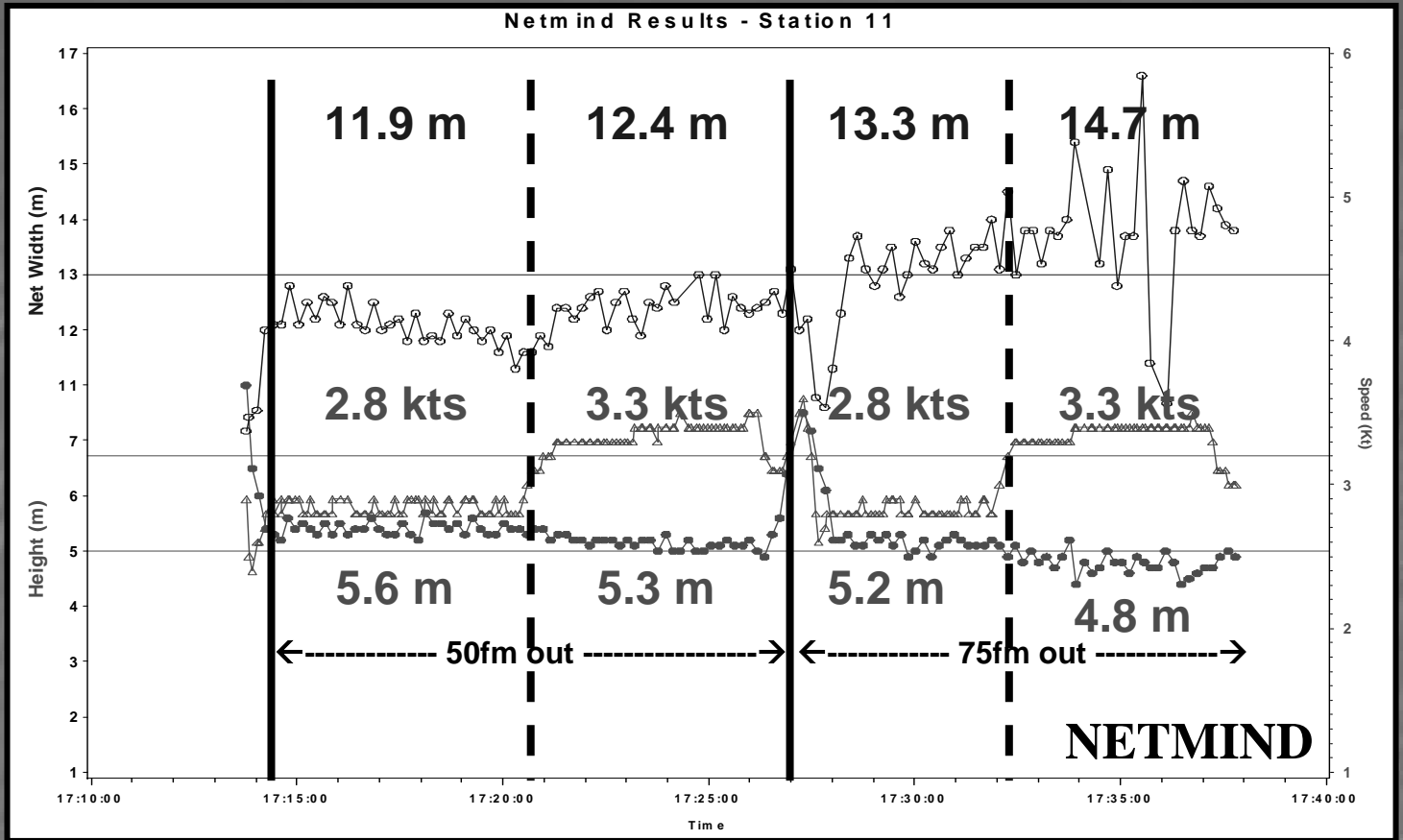


Tow Parameters:

- With Current
- Net settings neutral
- Doors in Front Hole (less aggressive) – All links let out on back of door (less aggressive still)
- Inshore shoal water (~60ft. Depth)
- 50 fm. Cable out

Station 11 – Both sensor sets installed / Scanmar data lost

Speed change test / Scope change test



Tow Parameters:

- Against Current
- Net settings neutral
- Doors in Back Hole (more aggressive) – Two links in on back of door (more aggressive still)
- Inshore shoal water (~60ft. Depth)
- 50 fm. Cable out – changed to 75 fm out at about 13 minutes (800 sec)